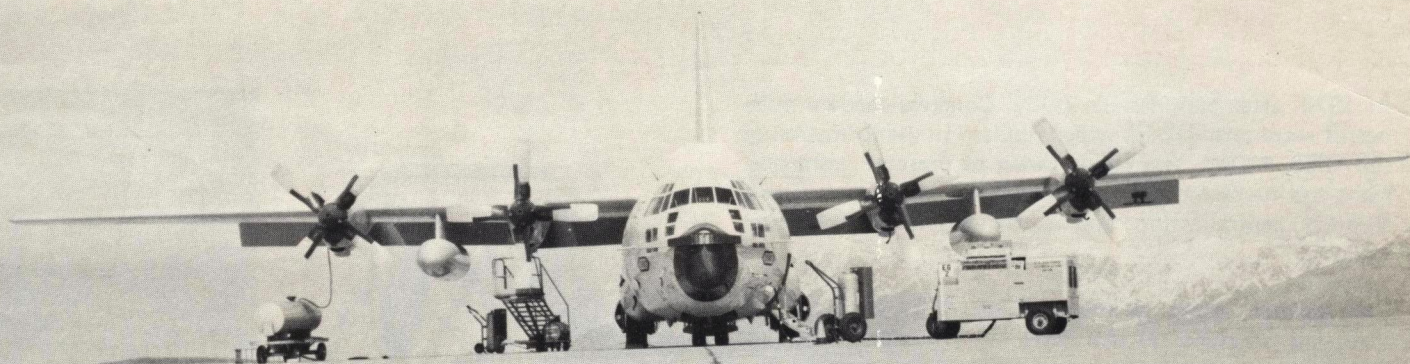


*Its a big job caring for the  
many helicopters used by the  
1550 ATTWg.*



HC-130 "Hercules"

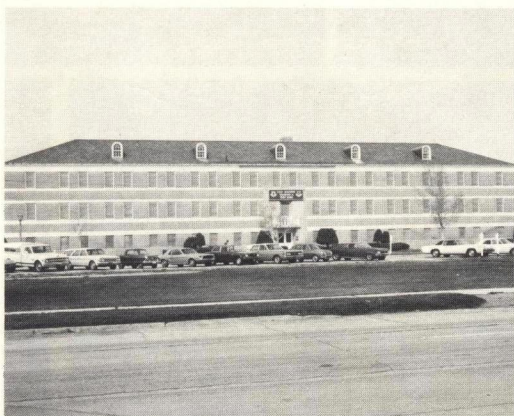
# 1550th Aircrew Training and Test Wing



H-43



H-3



H-53



HH-1H



UH-1N



TH-1F



In 1970, after considerable study, Congress made a number of recommendations which resulted in the formation of the 1550 ATTW. The major thrust of these recommendations was increased training effectiveness with reduced costs through centralization and consolidation of helicopter training.

The specific upshot of this Congressional activity was a threefold program: 1) that fixed wing training would no longer be required for helicopter pilots, 2) that the Army would assume responsibility for ALL undergraduate helicopter training; and 3) that the Air Force would establish a central training unit for all Air Force helicopter training.

Later that year, this responsibility devolved upon the Military Airlift Command, principal user through its Aerospace Rescue and Recovery Service of Air Force helicopter resources. MAC then surveyed a number of bases, after which the Air Force selected Hill AFB.

After public announcement of the formation of the 1550th and its designated home occurred early in March of 1971, an advanced party arrived to bring into being a fully operational training organization by July. Elements of this organization came from Sheppard AFB, Tex., Shaw AFB, S.C., Hurlburt Field, Fla., and Eglin AFB, Fla.

All of these organizations have been combined into components of the 1550th ATTWg. With our manning of 1200 personnel, we are programmed to graduate approximately 1200 students per year.

The 1550th Aircrew Training and Test Wing was activated at Hill AFB on 1 July 1971. It is unique in the Air Force in that it conducts all advance Helicopter Training for all major air commands. It also trains all pararescue personnel who are continually adding to their world famous record of life savings both in combat and peace time including coverage for space launches. In addition, the Wing conducts all refueling training involving the HC-130 rescue aircraft with helicopters having inflight refueling capability. The HC-130s are also used for Pararescue Parachute Training. This Wing is also responsible for testing of new concepts, components, and techniques involving all types of rescue missions. The official mission statement follows:

The mission of the 1550 Aircrew Training and Test Wing is to operate a consolidated Air Force helicopter

